

"YOUR SOURCE FOR BULLS ON THE HI-LINE"

30TH ANNUAL SALE



MILK RIVER ANGUS

55 Bulls Sell

Bulls evaluated for
performance, carcass,
and fertility

DUFF NAPOLEON 232



IDEAL 1614 TRAVELER OF 4223



POSS WINCHESTER

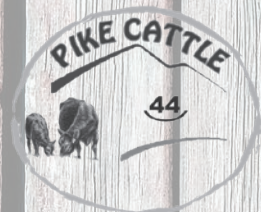


Wednesday

April 15, 2026

Bear Paw Livestock
Chinook, Montana

Lunch at 11:30 • Sale at 1:00



Bryan Pike
406-788-5952
Chinook, MT
bpik4@hotmail.com



Kade, Shane & Morgan Friede
406-357-2410
Scott & Fay Friede • 406-399-3933
Chinook, MT
sfriede@hotmail.com



Ross & Bruce Christofferson
406-301-0887 or 406-390-3594
Malta, MT
rc516@mtintouch.net

www.MilkRiverAngus.com



1040 North Fork Road • Chinook, MT 59523

www.milkriverangus.com

We would like to extend a warm welcome to you for the 30th Annual Milk River Angus Bull Sale on April 15, 2026. Reaching this milestone is something we are incredibly proud of, and it would not be possible without the continued support and confidence of customers like you.

This year's sale offering is brought to you by Milk River Angus along with our valued consignors, C-Angus, North Fork Angus, and Bryan Pike. Each program is built on a shared commitment to thoughtful sire selection, strong maternal foundations, and practical functionality. Our goal has always been to raise cattle that not only perform but also stand the test of time, weather, and the ever-changing demands of the cattle industry.

We are excited to present a select group of stout, performance-driven bulls designed to go out and work in real-world conditions. Whether you are looking to add growth, maternal strength, or overall balance to your herd, we believe this set of bulls offers something to fit a wide range of breeding programs.

As always, we welcome your calls and conversations. We take pride in knowing our cattle and are happy to visit with you about the offering to help you make the best selection for your operation.

We truly appreciate your faith in our breeding programs and your continued support over the years. We look forward to seeing you on sale day and visiting with you in person.

Sincerely,
C-Angus
North Fork Angus
Bryan Pike

MILK RIVER BULL SALE CONSIGNORS

LOTS 13 - 30



Ross & Bruce Christofferson
406-301-0887 or 406-390-3594
Malta, MT
rc516@mtintouch.net



LOTS 1 - 12

Kade, Shane & Morgan Friede
406-357-2410
Scott & Fay Friede
406-399-3933
Chinook, MT
sfriede@hotmail.com



LOTS 31 - 53

Bryan Pike
406-788-5952
Chinook, MT
bpik4@hotmail.com

"YOUR SOURCE FOR BULLS ON THE HI-LINE"



MILK RIVER ANGUS

30TH ANNUAL SALE

Wednesday April 15, 2026

Bear Paw Livestock • Chinook, Montana

Lunch at 11:30 • Sale at 1:00

Selling...55 Yearling Angus Bulls

Sight Unseen Purchase Guarantee

If you cannot attend the sale you have options to place your bid:

- Bid on-line through Frontier Live. (See instructions on this page)
- Leave your bid(s) with any of the fieldmen, auctioneer or consignors.

We will make every effort to purchase a bull for you that will fit your budget and needs. If you are not satisfied upon delivery you don't own the bull(s).

Health & Performance

All bulls sell with complete performance test information including scrotal measurements and ultrasound data. The bulls have been given a breeding soundness and fertility exam by Dr. Brock Aiton. Ultrasound evaluation by Sonja Gregory, AAA certified technician. All bulls have received Fusoguard (Footrot vaccine), Pyramid MLV 5, Inforce 3, 7 way with somnus booster, Safeguard wormer, pour on and have tested negative for BVD.

Genomic Enhanced EPDs



All bulls have been DNA tested for parentage. Numerous bulls have been HD50K tested to increase EPD accuracies and predictability. Look for the HD50K symbol on the pedigrees of those bulls. EPDs are current as of 3/25/2025. Updated EPDs at Angus.org

First Year Breeding Guarantee

All bulls selling for \$4,000 or more will be covered If they are injured during their first breeding season. Breeding season is defined as the 90-day period following the first turnout of the bulls. Please notify the breeder as soon as possible(no later than Sept. 1st) should an injury occur and prior to the bull being sold for salvage. An injured bull that will not heal, will be given 50% cash back of the purchase price minus the salvage value, or credit toward a replacement bull if one is available. If needed, a veterinarian may be consulted.

Retained Interest

Sellers are reserving 1/3 revenue sharing interest on all bulls. Natural use and salvage belongs to the buyer. If the seller chooses to collect semen from a bull that you have purchased, it will be done at your convenience and the seller's expense.

Terms and Conditions

All cattle sell according to the standard terms and conditions of the American Angus Association.

Delivery/Hauling Rebates

Free delivery in Montana and at cost outside of Montana. \$50 rebate on every bull you take home the day of the sale.

Sale Order

Sale order has been picked by each consignor.

Videos

Videos of the bulls can be seen on the Milk River website www.milkriverangus.com or www.frontierlivesale.com.

Photos

Photos by Kate Loose, Seven Diamond Photography. Thank You!

Accommodations

Chinook Motor Inn 406-357-2248
 Bear Paw Court..... 406-357-2221

CALVING EASE

- ★ Recommended for Cows Only
- ★★ Moderate calving ease
- ★★★ Easiest Calving Bulls in the Sale

Sale Day Phones

Bear Paw Livestock 406-357-2286
 Travis Buck 406-390-0555
 Dexter Buck 406-799-2285
 Scott Fraser..... 406-860-6548

Auctioneer

Kyle Shobe 406-366-0472

Representatives

Western Ag Reporter, John Goggins 406-698-4159
 Western Livestock Journal, Kevin Murnin..... 406-853-4638
 Frontier Sales Live, Scott Fraser 406-860-6548

Lunch

Complimentary beef lunch served at 11:30 am. Prepared by Smokin' OX Premium BBQ.

PRE-SALE SOCIAL

Tuesday April 14, 2026 5-8 pm

Bear Paw Livestock • Chinook, Montana

Come view the bulls, enjoy drinks and food and visit with the breeders about their bulls.


The bulls are available for inspection anytime before the sale at Hould Feedlot, Malta, MT. They will be moved to Bear Paw Livestock the day before the sale.

FRONTIER LIVE SALE

This Sale will be broadcast live on www.frontierlivesale.com. To view a sale,

1. Create an account, if you have already done so skip to next step. To create a new account, click on the word **Registration** in the upper right hand corner. You must fill out the information requested. Then click **Create Account**. An email will be sent to your email account you provided. Please click the link in the email to activate your new account.
2. Once you click the link, your account will now be activated
3. At this point, you may click **Continue To Browse Our Site**. This will allow you to view all upcoming auctions.
4. Once you see the auction you are interested in, click **Get Approved To Bid** for absentee and live bidding.
5. Please enter your information in the form. Depending on the auctioneer, different information may be requested. Click **I agree to sale terms and conditions**. Congratulations! You are now approved for the auction. Now that you're approved you can participate in the auction and bid on its items.
6. Login on sale day with the credentials provided at registration.

Call 866-313-0123 for tech help.



PLEASE BRING THIS BOOK WITH YOU TO THE SALE



— NORTH FORK ANGUS REFERENCE SIRE —

REFERENCE SIRE **IDEAL 1614 TRAVELER OF 4223**

Calved: 02/27/21 Tattoo: 1614 Reg: +20163984

Ideal 1168 of 9814 Lady#
Ideal 4223 of 1168 Blkbrd
Ideal 2441 of 9524 Blkbrd

Ideal 9814 of 6832 7607
Ideal 9011 of R Int 8155
Ideal 9524 of 5570 6809#
Ideal 7259 of 3542 0421

Sitz Uncommon#
Ideal 3405 of Uncon Betty#
Ideal 6505 of 3542 34#

Sitz Upward 307R#
Sitz Ellunas Elite 1697
Ideal 3542 of 7451 7417#
Ideal 34 of 049 1517

\$M	+45
\$W	+46
\$B	+104
\$C	+180

CED	BW	WW	YW	Milk	Marb	RE	Fat
+7	+0.8	+49	+102	+31	+32	+30	+047

Proudly owned with E7 Angus. We AI heifers to him and have pasture-bred with him each year we've owned him. He is a muscular, long striding, proven herd sire for us, leaving behind outstanding progeny! He has excellent foot and leg structure. The eleven March-born bull calves we weaned on October 16th this year from him averaged 681#s.

Sons sell as lots 2, 3, 4, and 5

REFERENCE SIRE **IDEAL 3217 RITO OF QB**



REFERENCE SIRE **IDEAL 3217 RITO OF QB**

Calved: 02/11/23 Tattoo: 3217 Reg: +20893863

S A V Regard 4863#
S A V Quarterback 7933#
S A V Blackcap May 3525

S A V Resource 1441#
S A V Blackcap May 5530#
S A V Final Answer 0035#
S A V May 2397#

Ideal Encore of 9524 Lady
Ideal 7704 of Encore Blkbrd
Ideal 5423 of 3365 Blkbrd

Ideal 9524 of 5570 6809#
Ideal 3020 of SE 6X7 Lady
Ideal 3365 of 1740 Belle
Ideal 3569 of 9524 Blkbrd

\$M	+46
\$W	+74
\$B	+135
\$C	+221

CED	BW	WW	YW	Milk	Marb	RE	Fat
+8	-0.4	+74	+130	+27	+08	+69	+039

Picture was taken as he just finished up his second breeding season for us. This bull was our pick at the Jorgensen livestock Sale in 2024. He is a very smooth-made bull with excellent feet and legs and extra length. His dam is an Elite Jorgensen donor cow - Ideal 7704 of Encore Blkbrd. Weaned four March-born bull calves at 687 avg.

Sons sell as lots 7 and 8

E7 CORNERSTONE H608



REFERENCE SIRE **E7 CORNERSTONE H608**

Calved: 03/07/20 Tattoo: H608 Reg: 20468855

Ideal 1281 of 6469 Jilt
Ideal 5609 of 1281 Marjorie#
Ideal 9763 of 332 6563

Ideal 6469 of 2215 3676
Ideal 2636 of 750 0427#
Ideal 332 of 049 8221
Ideal 6563 of 4545 3611

Master Approval 391
E7 Black Lassie D608
E7 Black Lassie Z346

GDAR Approval 9328
MA Beauty Pride 91
Ideal 8532 of 3542 6309
E 7 Black Lassie P27#

\$M	+36
\$W	+45
\$B	+144
\$C	+223

CED	BW	WW	YW	Milk	Marb	RE	Fat
-7	+3.7	+59	+112	+28	+67	+74	-.006

This bull is a son of the co-top selling Ideal 5609 in the 2016 Jorgensen bull sale. His dam is from Ede's Black Lassie cow family known for producing high growth and top performing herd sires and very attractive daughters that know how to do their job. We weaned ten March sons of his at 686 avg.

Sons sell as lots 9 and 10

REFERENCE SIRE **IDEAL 5483 OF 4636 LADY**

Calved: 02/11/15 Tattoo: 5483 Reg: 18243397

Baldrige Guru 427#
Ideal 4636 of 452 6187
Ideal 6187 of 3452 3128

Connealy Dateline#
Baldrige Beauty 155#
Ideal 3452 of 6807 3134
Ideal 3128 of 115 0322

Ideal 9232 of 6469 7504
Ideal 1157 of 9232 Lady
Ideal 9850 of S Exc 5516

Ideal 6469 of 2215 3676
Ideal 7504 of 3542 086
Sinclair Excellency 5X25
Ideal 5516 of 3542 1285

\$M	+71
\$W	+34
\$B	+85
\$C	+181

CED	BW	WW	YW	Milk	Marb	RE	Fat
+16	-4.0	+31	+79	+34	+28	+46	+033

Another herd sire proudly owned with E7 Angus. We pasture bred with 5483 for nine years. Another very muscular, athletic bull. He left us with some very good females.

Son sells as lot 11

REFERENCE SIRE **E7 RENOWN L636 3E004**

Calved: 04/06/23 Tattoo: L636 Reg: 21398084

Ideal 7122 of REN Blackcap
E7 Renown J646
E7 Blackbird E646

S A V Renown 3439#
Ideal 3800 of Uncon Blkcp
Ideal 5789 of 9524 Eirilou
E7 Blackbird W177

Ideal 4144 of Res Blkbrd
E7 Carey Wix E636
E7 Carey Wix W184

S A V Resource 1441#
Ideal 4363 of 0T26 2574#
LT Total Edge 6045
E 7 Carey Wix S47

\$M	+60
\$W	+61
\$B	+107
\$C	+199

CED	BW	WW	YW	Milk	Marb	RE	Fat
+12	-2.3	+52	+99	+32	+30	+45	+053

This is a son from one of Ede's high-producing E7 cows. Weaned six March sons at 700 avg.

Son sells as lot 12

— C BAR ANGUS REFERENCE SIRES —

POSS WINCHESTER



REFERENCE SIRE

POSS WINCHESTER

Calved: 01/25/21 Tattoo: 1534 Reg: +20060473

Cherry Creek Land Grant#
Connealy Clarity
 Breshie of Conanga 6988

K C F Bennett Homestead#
 Cherry Crk Eva B27 M
 Connealy Confidence Plus#
 Brelly of Conanga 367

Poss Easy Impact 0119
Poss Blueblood 6502
 Poss Blueblood 920

Poss Total Impact 745#
 Poss Elmaretta 736
 Connealy All Around#
 Poss Blueblood Lady 5114

\$M	+68
\$W	+78
\$B	+245
\$C	+386

CED	BW	WW	YW	Milk	Marb	RE	Fat
+9	+1.9	+85	+154	+24	+1.63	+1.37	+0.26

Winchester is bold Ribbed and deep bodied, with genetic, phenotype, and maternal merit to be captured in one package.
Sons sell as lots 16, 18, and 22.

MONTANA KELLY 2036



REFERENCE SIRE

MONTANA KELLY 2036

Calved: 02/10/22 Tattoo: 2036 Reg: +20508853

Mohnen Substantial 272#
Sitz Stellar 726D#
 SITZ Pride 200B

Benfield Substance 8506#
 Mohnen Glyn Mawr Elba 1758
 Connealy Final Product#
 Sitz Pride 308Y#

S A V Resource 1441#
Coleman Donna 505
 Coleman Donna 714

Rito 707 of Ideal 3407 7075
 S A V Blackcap May 4136
 Connealy Onward#
 Coleman Donna 386

\$M	+92
\$W	+62
\$B	+128
\$C	+258

CED	BW	WW	YW	Milk	Marb	RE	Fat
+9	-0.7	+68	+118	+19	+2.0	+8.2	+0.49

Superbly attractive in his design, Kelly 2036 posted a ADG of 120 in the Montana Herd with a negative birth EPD to his credit. Moderate in stature.
Sons sell as lots 13, 14, 15, 19, and 26.

FF CLARITY L51



REFERENCE SIRE

FF CLARITY L51

Calved: 01/25/23 Tattoo: L51 Reg: +20833265

Cherry Creek Land Grant#
Connealy Clarity
 Breshie of Conanga 6988

K C F Bennett Homestead#
 Cherry Crk Eva B27 M
 Connealy Confidence Plus#
 Brelly of Conanga 367

Hoover No Doubt#
FF Barbaramere H95
 JF Barbaramere B35#

Mogck Bullseye#
 Miss Blackcap Ellston J2
 Musgrave Foundation#
 JF Barbaramere Y3#

\$M	+103
\$W	+75
\$B	+210
\$C	+375

CED	BW	WW	YW	Milk	Marb	RE	Fat
+3	+4.6	+92	+153	+17	+8.3	+1.46	-0.44

A Half brother to Winchester, produces thick cattle, good feet, strong EPD and \$M and \$C packages.
Sons sell as lots 17, 21, 25, 27, and 30.

REFERENCE SIRE

SITZ BARRICADE 632F

Calved: 02/01/18 Tattoo: 632F Reg: 19078148

Mohnen Substantial 272#
Sitz Stellar 726D#
 SITZ Pride 200B

Benfield Substance 8506#
 Mohnen Glyn Mawr Elba 1758
 Connealy Final Product#
 Sitz Pride 308Y#

Sitz Superior 10971
SITZ Barbaramere Nell 765D
 Sitz Barbaramere Nell 73T

GDAR Game Day 449#
 Sitz RLS Eisa Evergreen 5279
 Sitz New Design 458N#
 Sitz Barbaramere Nell 109R

\$M	+57
\$W	+64
\$B	+155
\$C	+258

CED	BW	WW	YW	Milk	Marb	RE	Fat
-1	+4.2	+83	+140	+13	+5.5	+4.7	+0.81

Sitz Barricade is unmatched in his depth of body, muscle shape and power combined with outstanding growth figures. Look to sire easy fleshing heifers with maternal heritage
Son sells as lot 23.

REFERENCE SIRE

ELLINGSON PROLIFIC

Calved: 03/01/21 Tattoo: 1290 Reg: 20136857

S Powerpoint WS 5503#
Ellingson Profound 8155
 EA Rosetta 6157#

Tehama Revere
 S Queen Essa 248
 Connealy Capitalist 028#
 EA Blackbird 0038#

Koupal Juneau 797#
EA Queen 8070
 EA Queen 2350

O C C Juneau 807J#
 Koupals Elba 187
 G V F Forward 0141
 E A Queen 0313

\$M	+50
\$W	+63
\$B	+168
\$C	+268

CED	BW	WW	YW	Milk	Marb	RE	Fat
-2	+4.2	+85	+146	+16	+7.1	+6.4	+0.18

Ellingson Prolific has a tremendous maternal heritage, flawless foot shape and extra heel depth, raise deep broody cattle.
Son sells as lot 24.

— PIKE CATTLE REFERENCE SIRES —

REDLAND FOUNDATION 249



REDLAND ROSCOE



REFERENCE SIRE

REDLAND FOUNDATION 249

Calved: 03/22/19 Tattoo: 249 Reg: 19638906

O C C Zodiac 655Z
O C C Chancellor 767C
O C C Dixie Erica 706S

O C C Umax 820U
O C C Dixie Erica 628W
O C C Missing Link 830M#
O C C Dixie Erica 614M

O C C Emblazon 854E#
Redland Lass 211
Redland Lass 193

D H D Traveler 6807#
Dixie Erica of CH 1019
Sitz Alliance 6595#
Redland Lass 137

\$M	+69
\$W	+30
\$B	+72
\$C	+162

CED	BW	WW	YW	Milk	Marb	RE	Fat
+14	-0.4	+41	+69	+16	+55	+02	+065

My pick of the 2020 Redland Angus Sale. He has sired the high selling bull in the 2022-2025 Milk River Sales. His calves show tremendous vigor with ample amount of growth. His daughters are a treat being very feminine, docile but motherly with ideal udder structure. Now calving his third set of his daughters. They are proving very productive and look like they'll have a lasting impact. **Sons sell as lots 37, 38, 39, 40, and 41**

REFERENCE SIRE

REDLAND ROSCOE

Calved: 03/15/20 Tattoo: 450 Reg: 20139774

Redland Emblazon 5437
Redland Emblazon 1205
Redland Blackbird 1632

O C C Emblazon 854E#
Redland Miss Burgess 1392
W R A Rito 8X8 J9
Redland Blackbird 1219#

Mc Cumber Tremendous 2008
Redland Erica 1386
Redland Erica 1810

O C C Tremendous 619T#
Miss Wix 2022 HC Mc Cumber#
GDAR Game Day 449#
Redland Erica 884#

\$M	+49
\$W	+48
\$B	+107
\$C	+188

CED	BW	WW	YW	Milk	Marb	RE	Fat
+10	-0.1	+53	+100	+26	+11	+1.03	-.007

Top selling bull of the 2022 Redland Angus Sale. He's a true "beef" bull. Massive depth of rib with added length and bone. Despite this, his calves come quite easily with average birthweights. He sires the type of cattle that will really perform, but leave functional, sound, high volumed daughters. Daughters are now in production and look the part. High capacity, adequate milk, and tidy udders. **Sons sell as lots 42, 43, 44, and 45**



Redland Foundation Daughter Udder



Redland Foundation Two Year Old

REFERENCE SIRE

REDLAND TREMENDOUS 98

Calved: 03/15/22 Tattoo: 98 Reg: 20767603

O C C Tremendous 619T#
Mc Cumber Tremendous 2008
Miss Wix 2022 HC Mc Cumber#

O C C Emblazon 854E#
O C C Dixie Erica 960H
Leachman Right Time#
Miss Wix 7111 of Mc Cumber

O C C Do It All 656D
Redland Marshall 120
Redland Marshall 93

O C C Zodiac 655Z
O C C Dixie Erica 827A
GDAR Game Day 449#
Redland MS Marshall 44

\$M	+75
\$W	+36
\$B	na
\$C	na

CED	BW	WW	YW	Milk	Marb	RE	Fat
+16	-2.6	+44	+76	+20	na	na	na

Purchased out of Redland Angus to inject the McCumber Tremendous 2008 genetics. The Tremendous 2008 daughters make ideal, durable range cows. With OCC Do It All on the dam side, he is soft made with good muscle expression and capacity. His calves come easy with great vigor. He is a good dispositioned bull and easy to be around. **Sons sell as lots 46, 47, 48 and 49**

REFERENCE SIRE

DUFF NAPOLEON 232

Calved: 02/22/12 Tattoo: 232 Reg: 17780630

Duff Basic Instinct 6501
Duff Distinction 9105
Duff NL B351 Lady Pop 619

O C C Missing Link 830M#
O C C Dixie Erica 814G
Leachman Right Time#
E&B Lady Popatop 351

Duff New Edition 6108
Duff Eur 443 Merle 808
DCC NL 652K Merle 443#

O C C Genesis 872G
O C C Dixie Erica 814G
DCC New Look 101
C M Merle 652K

\$M	+61
\$W	+39
\$B	+69
\$C	+150

CED	BW	WW	YW	Milk	Marb	RE	Fat
+12	+0.0	+54	+87	+10	-.23	+60	+044

Napoleon was selected to use as an outcross AI sire due to his proven record of injecting impressive amounts of muscling. His sons have as much muscle expression and natural thickness as any sire group I've encountered. The birth to weaning growth is incredible in his calves. They seem to slow down post weaning. This should prove effective in moderating a cowherd without sacrificing performance. Daughters are known for excellent udder quality along with extreme fleshing ability. He is the sire of well know AI sires Duff 4 Real and Blair's External Law. **Sons sell as lots 31, 32, 33, 34, 35, and 36**

1 OUT OF SALE NF



IDEAL 1614 TRAVELER OF 4223

2 NORTHFORK TRAVELER NK10 NF

Calved: 03/14/25 Reg: 21375577
 Ideal 4223 of 1168 Blkbrd
Ideal 1614 Traveler of 4223
 Ideal 3405 of Uncon Betty#

Ideal 1168 of 9814 Lady#
 Ideal 2441 of 9524 Blkbrd

Sitz Uncommon#
 Ideal 6505 of 3542 34#

NF Remarkable 640 GE53
NF Black Lassie K10
 E7 Black Lassie G833

CAR Remarkable 640
 NF Queen Ann E53 of T111
 Ideal 6567 of 1262 Marjorie
 E7 Black Lassie C542

\$M	+34
\$W	+20
\$B	+87
\$C	+147

CED	BW	WW	YW	Milk	Marb	RE	Fat
+5	+0.5	+41	+83	+17	+0.39	-0.14	+0.024
Calving Ease	Birth	205	NR	ADG	365	YR	Scrotal
★★	81	717	96	3.74	1299	92	39.4
Adj IMF/ratio	Adj REA/ratio	Adj Rib Fat/ratio	Adj Rump Fat/ratio				
4.32 / 112	12.2 / 90	0.27 / 82	0.36 / 95				

A smooth, long-striding bull with good gain and an adj RE at 12.2 and a 112 IMF Ratio. The young dam behind this calf is a beautiful wedge-shaped cow. Great udder and excellent feet; bred back first cycle; 1215#s on weaning day while weaning off 706#s.



4 NORTHFORK TRAVELER N685 NF

Calved: 03/10/25 Reg: 21375580
 Ideal 4223 of 1168 Blkbrd
Ideal 1614 Traveler of 4223
 Ideal 3405 of Uncon Betty#

Ideal 1168 of 9814 Lady#
 Ideal 2441 of 9524 Blkbrd

Sitz Uncommon#
 Ideal 6505 of 3542 34#

CAR Bismark 371
CAR Miss Susie 685
 CAR Miss Susie 4198

S A V Bismarck 5682#
 Car Miss Viking 9191
 CAR Hero 9143
 CAR Miss Susie 1164

\$M	+71
\$W	+59
\$B	+88
\$C	+185

CED	BW	WW	YW	Milk	Marb	RE	Fat
+12	-1.0	+54	+98	+28	+0.27	+0.44	+0.024
Calving Ease	Birth	205	NR	ADG	365	YR	Scrotal
★★★	73	727	97	3.98	1348	95	36.26
Adj IMF/ratio	Adj REA/ratio	Adj Rib Fat/ratio	Adj Rump Fat/ratio				
3.8 / 99	13.3 / 98	0.30 / 91	0.39 / 103				

Heifer bull who had a good gain at 3.46/day with an actual WW of 765#s and an adj RE of 13.3. Dam is 11 yrs old. She records a BR of 7 at 89; WR of 7 at 98; RE ratio of 6 at 100. Bonus - Heifer bull with super CED (calving ease direct, +12) plus super CEM (calving ease maternal, +12) Daughters will be able to lay down and have big calves. This would be a good one to keep daughters out of.



3 NORTHFORK TRAVELER NLO4 NF

Calved: 03/10/25 Reg: 21375579
 Ideal 4223 of 1168 Blkbrd
Ideal 1614 Traveler of 4223
 Ideal 3405 of Uncon Betty#

Ideal 1168 of 9814 Lady#
 Ideal 2441 of 9524 Blkbrd

Sitz Uncommon#
 Ideal 6505 of 3542 34#

E7 Deputy H261
NF Eola L04
 NF Eola G239 of D46

Ideal 6567 of 1262 Marjorie
 E7 Queen Ann X261
 E7 Durango ET99
 NF Morgans Eola D46

\$M	+45
\$W	+40
\$B	+105
\$C	+181

CED	BW	WW	YW	Milk	Marb	RE	Fat
+1	+2.1	+50	+103	+28	+0.23	+0.47	+0.036
Calving Ease	Birth	205	NR	ADG	365	YR	Scrotal
★	90	740	99	4.65	1465	103	36.77
Adj IMF/ratio	Adj REA/ratio	Adj Rib Fat/ratio	Adj Rump Fat/ratio				
3.14 / 82	14.2 / 104	0.27 / 82	0.28 / 74				

This is a long-made bull with a thick top; he showed good gain on a first calf heifer with an adj 205 at 740 and an adj RE of 14.2. This cow did a great job with her first calf weaning off 61% of her bodyweight on weaning day, checking in at 1222#s



LOT 6



LOT 6

Lot 6 with his Dam on Weaning Day



LOT 5

5 NORTHFORK TRAVELER N208
Calved: 03/17/25 Reg: 21375581

Ideal 4223 of 1168 Blkbrd
Ideal 1614 Traveler of 4223
 Ideal 3405 of Uncon Betty#
 E7 Durango ET99
NF Miss Charlo G208
 Miss Charlo 502

Ideal 1168 of 9814 Lady#
 Ideal 2441 of 9524 Blkbrd
 Sitz Uncommon#
 Ideal 6505 of 3542 34#
 Ideal 5789 of 9524 Erlou#
 E7 Neville Blackbird T99
 Connealy Thunder#
 Miss Charlo 325

\$M	+67
\$W	+55
\$B	+102
\$C	+199

CED	BW	WW	YW	Milk	Marb	RE	Fat
+4	+0.7	+52	+106	+33	+33	+19	+0.089
Calving Ease	Birth	205	NR	ADG	365	YR	Scrotal
★	88	700	94	4.38	1383	98	36.97
Adj IMF/ratio	Adj REA/ratio	Adj Rib Fat/ratio	Adj Rump Fat/ratio				
2.41 / 63	13.7 / 101	0.31 / 94	0.42 / 111				

An easy to look at bull with good muscle. WDA 3.4; adj RE at 13.7; A solid-producing 7 yr old moderate, trouble-free dam; she carries a RE ratio of 104 on 5 calves with a 368 day calving interval; she weighed 1364#s on weaning day while weaning her calf at 720 pounds.

6 NF IDEAL RAINFALL 2382 NL60
Calved: 03/08/25 Reg: 21421471

S A V Rainfall 6846#
Ideal 2382 Emulous of Rnfl
 Ideal 9221 Lady of 5609
 E7 Renown Impact H349
NF REN Impact Blackbird L60
 NF Rm E7Lady Blackbird J18

Coleman Charlo 0256#
 S A V Blackcap May 4136
 Ideal 5609 of 1281 Marjorie#
 Ideal 4404 of 9259 Lady#
 Ideal 7122 of REN Blackcap
 E7 Eola Z349
 NF Remarkable 640 GE53
 E7 Lady Blackbird G845

\$M	+56
\$W	+65
\$B	+114
\$C	+204

CED	BW	WW	YW	Milk	Marb	RE	Fat
+5	+1.3	+63	+111	+29	+39	+95	+0.000
Calving Ease	Birth	205	NR	ADG	365	YR	Scrotal
★	84	859	115	4.62	1579	111	37.71
Adj IMF/ratio	Adj REA/ratio	Adj Rib Fat/ratio	Adj Rump Fat/ratio				
5.00 / 130	15.5 / 114	0.38 / 115	0.52 / 137				

Superior gain, growth and carcass. Check out his muscle, depth and width! A favorite since birth. This calf weaned off at 837#s with a 3.75 WDA and an adj RE at 15.5. He is loaded with potential. Lot 6's dam weighed 1114 #s on weaning day. He weaned off at 77% of her body weight. He beat her up a bit, but she still bred back in first calving cycle on March 17th and has another bull calf on the ground.

7 NORTHFORK QUARTERBACK NH03

Calved: 03/08/25 Reg: 21375594

NF

S A V Quarterback 7933#
Ideal 3217 Rito of QB
Ideal 7704 of Encore Blkbrd

S A V Regard 4863#
S A V Blackcap May 3525
Ideal Encore of 9524 Lady
Ideal 5423 of 3365 Blkbrd



\$M	+57
\$W	+77
\$B	+99
\$C	+185

DDA Cooper 135U
NF Blackbird H03
NF Blackbird Z62

O C C Great Plains 943G#
DDA Galatea 859
Ideal 4636 of 452 6187
Kades Blackbird K2

CED	BW	WW	YW	Milk	Marb	RE	Fat
+11	+0.3	+68	+118	+31	+27	+35	+036
Calving Ease	Birth	205	NR	ADG	365	YR	Scrotal
★★★	78	707	95	4.32	1381	98	39.71
Adj IMF/ratio	Adj REA/ratio	Adj Rib Fat/ratio	Adj Rump Fat/ratio				
4.10 / 106	12.7 / 93	0.40 / 121	0.39 / 103				

Heifer bull with good growth potential and with a great CED(+11) and CEM(+14)--you don't always get that together. Keep the daughters! Lot 7 had a 3.35 WDA with 12.7 adj RE weaning off at 748#. Dam is a very functional, fertile young cow. Her dam was one of our favorites.



8 NORTHFORK QUARTERBACK NK28

Calved: 02/26/25 Reg: 21375589

NF

S A V Quarterback 7933#
Ideal 3217 Rito of QB
Ideal 7704 of Encore Blkbrd

S A V Regard 4863#
S A V Blackcap May 3525
Ideal Encore of 9524 Lady
Ideal 5423 of 3365 Blkbrd



\$M	+41
\$W	+60
\$B	+160
\$C	+249

NF Approval 591 HA398
NF Everelda Entense K28
E7 Everelda Entense F789

Master Approval 591
E7 Black Lassie A398
Ideal 3635 of 9524 Betty
E7 Everelda Entense Y318

CED	BW	WW	YW	Milk	Marb	RE	Fat
+3	+2.2	+68	+122	+27	+45	+40	+028
Calving Ease	Birth	205	NR	ADG	365	YR	Scrotal
★	88	767	103	4.6	1484	105	35.88
Adj IMF/ratio	Adj REA/ratio	Adj Rib Fat/ratio	Adj Rump Fat/ratio				
4.04 / 105	13.2 / 97	0.30 / 91	0.38 / 100				

Extra length, thick-topped bull; Above average wean and yearling ratios with good carcass traits. 3.4 WDA; 13.2 RE with high \$C and high \$B. Dam is an Approval daughter; these daughters have proven themselves to be excellent mothers for us.

IDEAL 7704 OF ENCORE BLKBRD



REFERENCE DAM

Dam of Ideal 3217 Rito of QB, Paternal Grandam of Lots 7 and 8.

9 NF CORNERSTONE NJ46

Calved: 03/18/25 Reg: 21375584

NF

Ideal 5609 of 1281 Marjorie#
E7 Cornerstone H608
E7 Black Lassie D608

Ideal 1281 of 6469 Jilt
Ideal 9763 of 332 6563
Master Approval 391
E7 Black Lassie Z346



\$M	+38
\$W	+31
\$B	+118
\$C	+191

DDA Cooper 135U
NF Ebony Gypsy 409 J46
Krein Ebony Gypsy 409

O C C Great Plains 943G#
DDA Galatea 859
Sitz Dash 10277#
Labeth Ebony GYPSY 254

CED	BW	WW	YW	Milk	Marb	RE	Fat
+5	+1.4	+54	+98	+16	+57	+61	+000
Calving Ease	Birth	205	NR	ADG	365	YR	Scrotal
★★	83	727	97	4.36	1407	99	36.19
Adj IMF/ratio	Adj REA/ratio	Adj Rib Fat/ratio	Adj Rump Fat/ratio				
4.16 / 108	13.6 / 100	0.29 / 88	0.25 / 66				

This bull had an actual scan wt of 1299#s; 13.6 RE and a 108 IMF Ratio; Good marbling; WDA of 3.43 weaning off at 731#s. Another Good CEM of +7.



10 NF CORNERSTONE N912

Calved: 03/18/25 Reg: 21375583

NF

Ideal 5609 of 1281 Marjorie#
E7 Cornerstone H608
E7 Black Lassie D608

Ideal 1281 of 6469 Jilt
Ideal 9763 of 332 6563
Master Approval 391
E7 Black Lassie Z346



\$M	+73
\$W	+39
\$B	+135
\$C	+248

KM Broken Bow 002#
PGC Miss Ext 9126
PGC Ext 8047

Summitcrest Complete 1P55#
Summitcrest Princess 0P12#
KMK Alliance 6595 187#
PGC Ext 567

CED	BW	WW	YW	Milk	Marb	RE	Fat
+2	+1.5	+45	+84	+24	+1.07	+49	+015
Calving Ease	Birth	205	NR	ADG	365	YR	Scrotal
89	684	92	3.63	1250	88	35	
Adj IMF/ratio	Adj REA/ratio	Adj Rib Fat/ratio	Adj Rump Fat/ratio				
4.65 / 121	13.7 / 101	0.35 / 106	0.39 / 103				

Another RE over 13 on this bull sporting a 13.7 adj RE. A Cornerstone son that should be a long-lasting herd sire. Dam has posted 3 calves at 101 RE ratio.

View video of all sale bulls at



www.MilkRiverAngus.com or
www.FrontierLiveSale.com



11 NORTHFORK MISTER GURU NL50

Calved: 02/27/25 Reg: 21375592

Ideal 4636 of 452 6187
 Ideal 5483 of 4636 Lady
 Ideal 1157 of 9232 Lady
 Baldridge Guru 427#
 Ideal 6187 of 3452 3128
 Ideal 9232 of 6469 7504
 Ideal 9850 of S Exc 5516
 NF Ideal 4223 HF01
 NF Queen Ann L50
 NF Queen Ann H25
 Ideal 4223 of 1168 Blkbrd
 NF Kades BlckcpLady RM F01
 DDA Cooper 135U
 E7 Queen Ann E674

\$M	+64
\$W	+39
\$B	+94
\$C	+186

CED	BW	WW	YW	Milk	Marb	RE	Fat
+7	+0.5	+43	+94	+27	-.06	+0.63	+0.14
Calving Ease	Birth	205	NR	ADG	365	YR	Scrotal
★★★	85	714	96	4.23	1375	97	35.42
Adj IMF/ratio	Adj REA/ratio	Adj Rib Fat/ratio	Adj Rump Fat/ratio				
3.67 / 95	12.8 / 94	0.29 / 88	0.37 / 97				

Should be a long-lasting heifer bull. 5483 proudly owned with E7 Angus is a muscular, long-striding herd sire that we pasture bred with every year for nine years. Moderate birth with a +9 \$EN which means he should produce those cows that can exist on less groceries. He left us some outstanding females.

12 NF REN RESOURCE NK08

Calved: 03/01/25 Reg: 21421472

E7 Renown J646
 E7 Renown L636 3E004
 E7 Carey Wix E636
 E7 Cornerstone H608
 NF Enchantress K08
 NF Enchantress D15
 Ideal 7122 of REN Blackcap
 E7 Blackbird E646
 Ideal 4144 of Res Blkbrd
 E7 Carey Wix W184
 Ideal 5609 of 1281 Marjorie#
 E7 Black Lassie D608
 RC Bruno 4605
 NF Enchantress B07

\$M	+46
\$W	+64
\$B	+125
\$C	+208

CED	BW	WW	YW	Milk	Marb	RE	Fat
+2	+1.7	+66	+121	+28	+0.16	+0.97	+0.039
Calving Ease	Birth	205	NR	ADG	365	YR	Scrotal
★	88	760	102	4.30	1470	104	35.98
Adj IMF/ratio	Adj REA/ratio	Adj Rib Fat/ratio	Adj Rump Fat/ratio				
3.47 / 90	14.1 / 104	0.35 / 106	0.37 / 97				

Very solid calf here - 102 WR; 104 YW; 102 Scan and a 104 RE ratio with an adj RE of 14.1. WDA 3.4 and actual weaning weight at 779. Should be excellent growth, carcass and fertility in this bull; Packed with muscle and maternal. Out of a very good Cornerstone daughter with solid production potential in her future.



Lot 11 with his Dam last summer



Lot 12 with his Dam on Weaning Day

13**C BAR KELLY 5410**

Calved: 02/13/25

Reg: 21452838

G-

Sitz Stellar 726D#
Montana Kelly 2036
Coleman Donna 505Mohnen Substantial 272#
SITZ Pride 200B
S A V Resource 1441#
Coleman Donna 714S A V Territory 7225
C Bar Forever Lady 0181
C Bar Forever Lady 6344S A V Resource 1441#
S A V Emblynette 3293
S A V Goodyear 1218
C Bar Forever Lady 772

\$M	+70
\$W	+54
\$B	+120
\$C	+226

CED	BW	WW	YW	Milk	Marb	RE	Fat
+6	+0.6	+60	+103	+22	+22	+76	+055
Calving Ease	Birth	205	NR	ADG	365	YR	Scrotal
★★★	85	619	96	3.76	1205	97	33.97
Adj IMF/ratio	Adj REA/ratio	Adj Rib Fat/ratio	Adj Rump Fat/ratio				
3.64 / 94	12.1 / 95	0.30 / 125	0.26 / 93				

- Sitz Stellar/Coleman Donna 505 (out of Coleman Donna 714)
- SAV Territory 7225
- SAV Resource 1441 on both sides of Pedigree, stacking maternal patriarchs
- Heifer bull

**15****C BAR KELLY 5414**

Calved: 02/13/25

Reg: 21452840

G-

Sitz Stellar 726D#
Montana Kelly 2036
Coleman Donna 505Mohnen Substantial 272#
SITZ Pride 200B
S A V Resource 1441#
Coleman Donna 714WW Rainfall 0505
C Bar Blackcap Lady 3456
C Bar Blackcap Lady 8269S A V Rainfall 6846#
WW Blackcap Kay 5050
DHRA Granite 2096
C Bar Blackcap Lady 6281

\$M	+86
\$W	+71
\$B	+114
\$C	+234

CED	BW	WW	YW	Milk	Marb	RE	Fat
+12	-1.0	+61	+103	+30	+34	+45	+089
Calving Ease	Birth	205	NR	ADG	365	YR	Scrotal
★★★	65	614	95	3.42	1147	92	32.97
Adj IMF/ratio	Adj REA/ratio	Adj Rib Fat/ratio	Adj Rump Fat/ratio				
3.67 / 95	12.7 / 99	0.21 / 88	0.23 / 82				

- Calving Ease Special
- Sitz Stellar grandson/Coleman Donna 505/WW Rainfall 0505
- \$M 84 Keep all the females
- Heifer bull

14**C BAR KELLY 5413**

Calved: 02/13/25

Reg: 21452839

G-

Sitz Stellar 726D#
Montana Kelly 2036
Coleman Donna 505Mohnen Substantial 272#
SITZ Pride 200B
S A V Resource 1441#
Coleman Donna 714WW Rainfall 0505
C Bar Miss Forever 3488
C Bar Miss Forever 5158S A V Rainfall 6846#
WW Blackcap Kay 5050
Sitz Wisdom 481T#
C Bar Miss Forever 704

\$M	+90
\$W	+67
\$B	+126
\$C	+253

CED	BW	WW	YW	Milk	Marb	RE	Fat
+10	+0.5	+64	+108	+25	+31	+91	+096
Calving Ease	Birth	205	NR	ADG	365	YR	Scrotal
★★★	62	624	97	3.52	1173	94	30.97
Adj IMF/ratio	Adj REA/ratio	Adj Rib Fat/ratio	Adj Rump Fat/ratio				
3.19 / 82	12.1 / 95	0.28 / 117	0.41 / 146				

- Sitz Stellar/WW Rainfall 505 /Sitz Wisdom anchors this calving ease bull
- The Famous Coleman Donna 505 makes her appearance
- Heifer bull

**16****C BAR WINCHESTER 5427**

Calved: 02/16/25

Reg: 21446047

G-

Connealy Clarity
Poss Winchester
Poss Blueblood 6502Cherry Creek Land Grant#
Breshie of Conanga 6988
Poss Easy Impact 0119
Poss Blueblood 920Musgrave 316 Dynamite
C Bar Blackette Lady 9207
C Bar Blackette Lady 0132#LD Capitalist 316#
MCATL Blackcap 711-1214
Basin Ambush 2P24#
C Bar Blackette Lady 603

\$M	+61
\$W	+75
\$B	+215
\$C	+340

CED	BW	WW	YW	Milk	Marb	RE	Fat
+6	+1.9	+79	+142	+27	+1.22	+91	+044
Calving Ease	Birth	205	NR	ADG	365	YR	Scrotal
★★	90	576	89	4.08	1211	97	33.04
Adj IMF/ratio	Adj REA/ratio	Adj Rib Fat/ratio	Adj Rump Fat/ratio				
3.92 / 101	11.8 / 92	0.20 / 83	0.22 / 79				

- An Outcross bull for us, moderate birth, strong IMF and Ribeye
- Showing a tick more frame

17**C BAR CLARITY 5432**

Calved: 02/17/25

Reg: 21452841

G-

Connealy Clarity
FF Clarity L51
FF Barbaramere H95Cherry Creek Land Grant#
Breshie of Conanga 6988
Hoover No Doubt#
JF Barbaramere B35#S A V Raindance 6848#
C Bar Forever Lady 0180
C Bar Forever Lady 8331Coleman Charlo 0256#
S A V Blackcap May 4136
SITZ Resource 415C
C Bar Forever Lady 5236#

\$M	+97
\$W	+82
\$B	+149
\$C	+290

CED	BW	WW	YW	Milk	Marb	RE	Fat
+4	+2.8	+83	+133	+22	+53	+82	-.031
Calving Ease	Birth	205	NR	ADG	365	YR	Scrotal
★	90	665	103	3.56	1220	98	42.1
Adj IMF/ratio	Adj REA/ratio	Adj Rib Fat/ratio	Adj Rump Fat/ratio				
3.79 / 98	11.8 / 92	0.19 / 79	0.19 / 68				

- Moderate birth, strong maternal with \$M of 97and SAV Raindance 6848



20 C BAR CRAFTSMAN 5441

Calved: 02/21/25 Reg: 21446208

Sitz Resilient 10208#
Connealy Craftsman
Black Cathy of Conanga 8521#

Musgrave 316 Explosion
C Bar Blackcap Lady 1240
C Bar Blackcap Lady 0150

Sitz Stellar 726D#
Sitz Miss Burgess 1856
Connealy Niobrara 5451
Black Carla of Conanga 450

LD Capitalist 316#
Musgrave Pride 517
CAR Duke 821
C Bar Blackcap Lady 8127

ANGUS
Powered by Ngenex GenCoast

\$M	+87
\$W	+87
\$B	+148
\$C	+279

CED	BW	WW	YW	Milk	Marb	RE	Fat
+2	+1.7	+70	+118	+37	+7.0	+5.3	+0.69
Calving Ease	Birth	205	NR	ADG	365	YR	Scrotal
★★	76	592	92	3.81	1186	96	30.39
Adj IMF/ratio	Adj REA/ratio	Adj Rib Fat/ratio	Adj Rump Fat/ratio				
5.95 / 153	12.0 / 94	0.23 / 96	0.37 / 132				

• Strong Maternal heritage, lighter birth weigh bull but maybe for larger heifers

18 C BAR WINCHESTER 5435

Calved: 02/18/25 Reg: 21446049

Connealy Clarity
Poss Winchester
Poss Blueblood 6502

LD Capitalist 316#
SA MissFreedom 218-33A
SHFI Miss Freedom 33A of 53#

Cherry Creek Land Grant#
Breshie of Conanga 6988
Poss Easy Impact 0119
Poss Blueblood 920

Connealy Capitalist 028#
LD Dixie Erica 2053
TC Freedom 104#
JSS Schurtpop 53

ANGUS
Powered by Ngenex GenCoast

\$M	+79
\$W	+83
\$B	+212
\$C	+354

CED	BW	WW	YW	Milk	Marb	RE	Fat
+8	+1.1	+76	+136	+31	+1.30	+1.05	+0.035
Calving Ease	Birth	205	NR	ADG	365	YR	Scrotal
★★★	86	611	95	4.59	1326	107	35.1
Adj IMF/ratio	Adj REA/ratio	Adj Rib Fat/ratio	Adj Rump Fat/ratio				
4.26 / 110	11.7 / 91	0.22 / 92	0.37 / 132				

• ST Genetics sire Poss Winchester 1534 is a half brother to our FF Clarity L51, strong maternal and strong indexes of Ribeye and Marbling
• Dam was bought from Musgrave in Illinois
• ADG 4.47#



21 C BAR CLARITY 5445

Calved: 02/21/25 Reg: 21452842

Connealy Clarity
FF Clarity L51
FF Barbaramere H95

S A V Powder River 0031
C Bar Blackette Lady 5258
C Bar Blackette Lady 877

Cherry Creek Land Grant#
Breshie of Conanga 6988
Hoover No Doubt#
JF Barbaramere B35#

S A V Pioneer 7301#
S A V Bessie Heiress 4149#
Bluegrass Lead On 521
C Bar Blackette Lady 603

ANGUS
Powered by Ngenex GenCoast

\$M	+95
\$W	+73
\$B	+147
\$C	+286

CED	BW	WW	YW	Milk	Marb	RE	Fat
-2	+4.8	+84	+127	+19	+5.4	+1.11	-0.080
Calving Ease	Birth	205	NR	ADG	365	YR	Scrotal
★	90	630	98	3.21	1131	91	33.3
Adj IMF/ratio	Adj REA/ratio	Adj Rib Fat/ratio	Adj Rump Fat/ratio				
2.89 / 74	12.0 / 94	0.12 / 50	0.12 / 43				

• Older dam that goes back to SAV Powder River
• Cow Bull, maternal bull

22 C BAR WINCHESTER 5453

Calved: 02/23/25 Reg: 21446048

Connealy Clarity
Poss Winchester
Poss Blueblood 6502

S A V Resource 1441#
C Bar Blackcap Lady 8226
C Bar Blackcap Lady 5287

Cherry Creek Land Grant#
Breshie of Conanga 6988
Poss Easy Impact 0119
Poss Blueblood 920

Rito 707 of Ideal 3407 7075
S A V Blackcap May 4136
HA Bismarck 1906
C Bar Blackcap Lady 298

ANGUS
Powered by Ngenex GenCoast

\$M	+44
\$W	+66
\$B	+175
\$C	+271

CED	BW	WW	YW	Milk	Marb	RE	Fat
+5	+3.2	+80	+151	+25	+6.7	+1.10	+0.002
Calving Ease	Birth	205	NR	ADG	365	YR	Scrotal
★	100	657	102	3.9	1265	102	34.26
Adj IMF/ratio	Adj REA/ratio	Adj Rib Fat/ratio	Adj Rump Fat/ratio				
4.07 / 105	13.5 / 105	0.21 / 88	0.19 / 68				

• ST Genetics sire, heavier birth, large ribeye sire
• Cow bull

19 C BAR KELLY 5439

Calved: 02/21/25 Reg: 21445675

Sitz Stellar 726D#
Montana Kelly 2036
Coleman Donna 505

Mohnen President 2659
C Bar Forever Lady 1300
C Bar Forever Lady 266#

Mohnen Substantial 272#
SITZ Pride 200B
S A V Resource 1441#
Coleman Donna 714

S A V President 6847#
Mohnen Jilt 1665
S A V Puritan 0414
C Bar Forever Lady 901

ANGUS
Powered by Ngenex GenCoast

\$M	+64
\$W	+58
\$B	+92
\$C	+183

CED	BW	WW	YW	Milk	Marb	RE	Fat
+2	+2.3	+71	+119	+18	-.22	+4.7	+0.025
Calving Ease	Birth	205	NR	ADG	365	YR	Scrotal
★★	82	639	99	5.05	1426	115	36.89
Adj IMF/ratio	Adj REA/ratio	Adj Rib Fat/ratio	Adj Rump Fat/ratio				
2.34 / 60	11.0 / 86	0.15 / 63	0.22 / 79				

• Another moderate birth, ADG of almost 5.00, Yearling adjusted weight of 1424#





23

C BAR BARRICADE 5457

Calved: 02/24/25 Reg: +21448656

Sitz Stellar 726D#
Sitz Barricade 632F
 SITZ Barbaramere Nell 765D

Mohnen Substantial 272#
 SITZ Pride 200B
 Sitz Superior 10971
 Sitz Barbaramere Nell 73T

Basin Payweight 1682#
Montana Blackbird 7251
 Galaxy Blackbird 2102

Basin Payweight 006S#
 21AR O Lass 7017
 Sitz Upward 307R#
 Riverbend Blackbird 4301

ANGUS
Graded by Angus Genetics

\$M	+66
\$W	+87
\$B	+181
\$C	+301

C-

- HERD SIRE ALERT
- Sitz Barricade 632F x Montana Blackbird 7251, who's dam Galaxy Blackbird 2102 was a featured Donor at Montana Ranch. Basin Payweight 1682 sired dam is also a donor for us. Posting a ADG of near 4.50 and yearling weight of almost 1400#
- Selling 1/2 and full possession. Retaining a right for semen collection

CED	BW	WW	YW	Milk	Marb	RE	Fat
+4	+2.8	+97	+168	+22	+81	+82	+055
Calving Ease	Birth	205	NR	ADG	365	YR	Scrotal
★	87	703	104	4.42	1393	103	35.33
Adj IMF/ratio	Adj REA/ratio	Adj Rib Fat/ratio	Adj Rump Fat/ratio				
4.85 / 120	13.2 / 105	0.23 / 96	0.28 / 108				

MONTANA BLACKBIRD 7251



Donor Dam of Lot 23
 Basin Payweight 1682 sire out of the famous
 Montana Ranch Donor dam, Galaxy Blackbird 2102.
 \$M 70 \$W 79 \$C 232

SITZ BARRICADE 632F



COLEMAN ABIGALE 9136



Donor Dam of Lot 24
9136 is sired by the famous SAV Renown 3436
The famous Abigale line is a stalwart of Coleman Angus Ranch
well known for their maternal excellence.

ELLINGSON PROLIFIC



24

C BAR PROLIFIC 5458

Calved: 02/24/25 Reg: +21446199

Ellingson Profound 8155
Ellingson Prolific
EA Queen 8070#

S Powerpoint WS 5503#
EA Rosetta 6157#
Koupal Juneau 797#
EA Queen 2350

S A V Renown 3439#
Coleman Abigale 9136
Coleman Abigale 0277#

Rito 707 of Ideal 3407 7075
S A V Blackcap May 4136
O C C Paxton 730P#
Bohi Abigale 6014

ANGUSGS
\$M +71
\$W +86
\$B +133
\$C +244

CED	BW	WW	YW	Milk	Marb	RE	Fat
-1	+1.4	+88	+149	+23	+2.2	+51	+0.07
Calving Ease	Birth	205	NR	ADG	365	YR	Scrotal
★★	72	642	95	4.30	1312	97	34.31
Adj IMF/ratio	Adj REA/ratio	Adj Rib Fat/ratio	Adj Rump Fat/ratio				
3.23 / 80	12.0 / 95	0.24 / 100	0.24 / 92				

- ET calf out of the famous Coleman Abigale family and sired by Ellingson Prolific 1290. Should have strong maternal, growth EPDs for weaning of 89 and Yearling of 149.
- Cow bull



25

C BAR CLARITY 5465

Calved: 02/27/25 Reg: 21452843

Connealy Clarity
FF Clarity L51
FF Barbaramere H95

Cherry Creek Land Grant#
Breshie of Conanga 6988
Hoover No Doubt#
JF Barbaramere B35#

Musgrave Apache 48-1786
C Bar Camilla Lady 0228
C Bar Camilla Lady 8250

Musgrave Apache
Musgrave Prim Lassie 1786
S A V Resource 1441#
C Bar Camilla 5191

ANGUSGS
\$M +103
\$W +78
\$B +159
\$C +309

CED	BW	WW	YW	Milk	Marb	RE	Fat
+7	+2.6	+73	+117	+26	+5.8	+1.24	+0.10
Calving Ease	Birth	205	NR	ADG	365	YR	Scrotal
★	90	660	102	3.61	1223	98	36.92
Adj IMF/ratio	Adj REA/ratio	Adj Rib Fat/ratio	Adj Rump Fat/ratio				
5.18 / 134	14.9 / 116	0.28 / 117	0.25 / 89				

- Outcross bull with low birth Musgrave Apache and SAV Resource 1441 on bottom side. \$M of 106 and \$C of 316
- Large Ribeye bull
- Cow bull

26

C BAR KELLY 5474

Calved: 03/04/25 Reg: 21462701

Sitz Stellar 726D#
Montana Kelly 2036
Coleman Donna 505

Mohnen Substantial 272#
SITZ Pride 200B
S A V Resource 1441#
Coleman Donna 714

S A V Resource 1441#
C Bar Blackcap Lady 0277
C Bar Blackcap Lady 649

Rito 707 of Ideal 3407 7075
S A V Blackcap May 4136
S A V 5175 Bando 2080
C Bar Blackcap Lady B03

ANGUSGS
\$M +77
\$W +76
\$B +131
\$C +247

CED	BW	WW	YW	Milk	Marb	RE	Fat
-1	+2.9	+84	+138	+21	+2.7	+4.4	+0.47
Calving Ease	Birth	205	NR	ADG	365	YR	Scrotal
★	100	676	105	3.67	1249	101	35.58
Adj IMF/ratio	Adj REA/ratio	Adj Rib Fat/ratio	Adj Rump Fat/ratio				
4.34 / 112	11.8 / 92	0.27 / 113	0.27 / 96				

- Growth in this Kelly 2036 bull. All around good bull
- Cow bull



29 C BAR ATLANTIS 5529

Calved: 03/19/25 Reg: 21445676 G-

Square B Atlantis 8060# Montana Atlantis 2067 Montana Rita 7068	S A V Rainfall 6846# Elbanna of Conanga 1209 Baldridge Bronc# Deer Valley Rita 4147
S A V Quarterback 7933# Coleman Blackcap 920 ZWT Blackcap 1508	S A V Regard 4863# S A V Blackcap May 3525 Duff Jetset 7122 O C C Lady Blackcap 753L

ANGUS
Powered by Angus Genetics

\$M	+29
\$W	+62
\$B	+160
\$C	+237

CED	BW	WW	YW	Milk	Marb	RE	Fat
-2	+3.3	+90	+148			+96	-.007
Calving Ease	Birth	205	NR	ADG	365	YR	Scrotal
★	86	655	101	3.94	1269	102	30.03
Adj IMF/ratio	Adj REA/ratio	Adj Rib Fat/ratio	Adj Rump Fat/ratio				
3.89 / 100	13.9 / 109	0.24 / 100	0.31 / 111				

- Montana Atlantis 2067 is a growth bull we are expecting big things from.
- Cow bull



MONTANA ATLANTIS 2067



REFERENCE SIRE

30 C BAR CLARITY 5581

Calved: 04/01/25 Reg: 21451693 G-

Connealy Clarity FF Clarity L51 FF Barbaramere H95	Cherry Creek Land Grant# Breshie of Conanga 6988 Hoover No Doubt# JF Barbaramere B35#
S A V Resource 1441# C Bar Elluna 9103 C Bar Vance 6291	Rito 707 of Ideal 3407 7075 S A V Blackcap May 4136 Shipwheel Vance 2617 C Bar Elluna 4048

ANGUS
Powered by Angus Genetics

\$M	+74
\$W	+66
\$B	+175
\$C	+301

CED	BW	WW	YW	Milk	Marb	RE	Fat
+9	+1.4	+66	+121	+26	+85	+1.23	+0.30
Calving Ease	Birth	205	NR	ADG	365	YR	Scrotal
★★★	82	739	114	3.80			
Adj IMF/ratio	Adj REA/ratio	Adj Rib Fat/ratio	Adj Rump Fat/ratio				
3.59 / 93	15.3 / 120	0.33 / 138	0.36 / 129				

- A young bull that weaned off 739# but was to young to get a yearling.
- Strong values on this SAV Resource 1441 dam.
- Large Heifers

Door Prizes

Bull Buyers stick around after the sale for a chance to win some fabulous door prizes, including a bronze by the late Bridger Bronze co-owner and artist Harvey Rattey, and a rope creation by Suzie Oxarart of Ropes by Suzie.

At the end of the sale, lot numbers will be drawn and those lots drawn will be the lucky winner of these nice door prizes!

27 C BAR CLARITY 5499

Calved: 03/10/25 Reg: 21451684 G-

Connealy Clarity FF Clarity L51 FF Barbaramere H95	Cherry Creek Land Grant# Breshie of Conanga 6988 Hoover No Doubt# JF Barbaramere B35#
KG Justified 3023# C Bar Blackcap 1200 Coleman Blackcap 920	Connealy Judgment KG Miss Magic 1443 S A V Quarterback 7933# ZWT Blackcap 1508

ANGUS
Powered by Angus Genetics

\$M	+96
\$W	+91
\$B	+185
\$C	+336

CED	BW	WW	YW	Milk	Marb	RE	Fat
+4	+2.6	+90	+149	+27	+61	+1.14	-.013
Calving Ease	Birth	205	NR	ADG	365	YR	Scrotal
★★	78	656	102	4.50	1357	109	38.93
Adj IMF/ratio	Adj REA/ratio	Adj Rib Fat/ratio	Adj Rump Fat/ratio				
3.64 / 94	14.9 / 116	0.32 / 133	0.33 / 118				

- Outcross bull for us, strong maternal coming from the Coleman Blackcap family.
- \$M of 98 78# birth
- Cow Bull

28 C BAR KEYSTONE 5504

Calved: 03/12/25 Reg: 21464256 G-

Shipwheel Keystone 7543 Shipwheel Keystone 0600 Shipwheel Eriskay 543#	Myers Keystone M263 Shipwheel Chloe 5125 Connealy Packer 547# Shipwheel Eriskay 150
Coleman Charlo 0256# Coleman Donna 0151 Coleman Donna 8145#	O C C Paxton 730P# Bohi Abigale 6014 Connealy Thunder# Coleman Donna 714

ANGUS
Powered by Angus Genetics

\$M	+71
\$W	+70
\$B	+140
\$C	+253

CED	BW	WW	YW	Milk	Marb	RE	Fat
+2	+3.8	+76	+118	+24	+65	+47	+0.34
Calving Ease	Birth	205	NR	ADG	365	YR	Scrotal
★	88	727	113	2.97	1191	96	36.84
Adj IMF/ratio	Adj REA/ratio	Adj Rib Fat/ratio	Adj Rump Fat/ratio				
3.78 / 97	13.3 / 104	0.29 / 121	0.37 / 132				

- Outcross Shipwheel Keystone 0600 by our Coleman Donna cow
- Moderate birth
- Cow bull



31 R44 NAPOLEON 5451

Calved: 03/02/25 Reg: 21433965 **PC**

Duff Distinction 9105 Duff Basic Instinct 6501
 Duff Napoleon 232 Duff NL B351 Lady Pop 619
 Duff Eur 443 Merle 808 Duff New Edition 6108
 DCC NL 652K Merle 443#

Sinclair Grass Master# BT Right Time 24J#
 R44 Barbaramere Jet 451 N Bar Primrose Y3051#
 Ox Bow Barbaramere Jet 5129# G A R Example 3204#
 Ox Bow Barbaramere Jet 3115#

\$M	+59
\$W	+39
\$B	+77
\$C	+159

CED	BW	WW	YW	Milk	Marb	RE	Fat
+10	-0.5	+48	+79	+20	-1.1	+42	-0.06
Calving Ease	Birth	205	NR	ADG	365	YR	Scrotal
★★★	81	688	96	3.35	1186	95	35.71
Adj IMF/ratio	Adj REA/ratio	Adj Rib Fat/ratio	Adj Rump Fat/ratio				
3.46 / 93	12.7 / 98	0.22 / 69	0.30 / 86				

Dam WR 10@102. Heifer Bull. Massive made dam from Sinclair Grassmaster has been a workhorse. Raised another keeper here at 11 years of age. The Napoloen cattle showed an impressive amount of birth to weaning growth.

32 R44 NAPOLEON 5568

Calved: 02/26/25 Reg: 21433960 **PC**

Duff Distinction 9105 Duff Basic Instinct 6501
 Duff Napoleon 232 Duff NL B351 Lady Pop 619
 Duff Eur 443 Merle 808 Duff New Edition 6108
 DCC NL 652K Merle 443#

Mc Cumber 4X13 Extra 077 Sinclair Extra 4X13#
 R44 Lass 568 Rosetta 811 of Mc Cumber#
 R44 Lass 359 Cole Creek Cedar Ridge 1V#
 R44 Lass 006

\$M	+78
\$W	+34
\$B	+76
\$C	+177

CED	BW	WW	YW	Milk	Marb	RE	Fat
+12	-1.8	+43	+70	+19	-0.6	+47	+0.39
Calving Ease	Birth	205	NR	ADG	365	YR	Scrotal
★★★	75	672	94	3.28	1165	93	36.46
Adj IMF/ratio	Adj REA/ratio	Adj Rib Fat/ratio	Adj Rump Fat/ratio				
2.72 / 73	13.5 / 105	0.33 / 103	0.36 / 103				

Dam WR 9@98. Heifer Bull. Another good Napoleon out of a productive old cow. She has left her mark in my herd with her daughters rising to the top. Longevity bred in here. She produce some range efficient daughters.



33 R44 NAPOLEON 5757

Calved: 02/25/25 Reg: 21433959 **PC**

Duff Distinction 9105 Duff Basic Instinct 6501
 Duff Napoleon 232 Duff NL B351 Lady Pop 619
 Duff Eur 443 Merle 808 Duff New Edition 6108
 DCC NL 652K Merle 443#

Ox Bow Cedar Ridge 2230 Cole Creek Cedar Ridge 1V#
 R44 Eisa Evergreen 757 Ox Bow Forever Lady 089
 R44 Eisa Evergreen 354# GDAR Game Day 449#
 Sitz RLS Eisa Evergreen 715R

\$M	+75
\$W	+39
\$B	+76
\$C	+174

CED	BW	WW	YW	Milk	Marb	RE	Fat
+12	-1.3	+48	+77	+18	+0.0	+40	+0.28
Calving Ease	Birth	205	NR	ADG	365	YR	Scrotal
★★★	74	717	100	3.26	1192	95	36.33
Adj IMF/ratio	Adj REA/ratio	Adj Rib Fat/ratio	Adj Rump Fat/ratio				
2.96 / 79	14.0 / 109	0.27 / 84	0.32 / 91				

Dam WR 7@98. Heifer Bull. Good muscle pattern on this calving ease bull. Really strong cow family that is consistently low birthweight. She produced the high seller in 2020 Milk River Sale. Granddam has a herd bull working for Gardner/Gaugler Angus.



34 R44 NAPOLEON 5863

Calved: 03/04/25 Reg: 21433957 **PC**

Duff Distinction 9105 Duff Basic Instinct 6501
 Duff Napoleon 232 Duff NL B351 Lady Pop 619
 Duff Eur 443 Merle 808 Duff New Edition 6108
 DCC NL 652K Merle 443#

R44 Paxton 6704 O C C Paxton 730P#
 R44 Blackbird 863 R44 Eisa Evergreen 002
 R44 Blackbird 549 Mc Cumber 4X13 Extra 077
 R44 Blackbird 355

\$M	+70
\$W	+41
\$B	+103
\$C	+204

CED	BW	WW	YW	Milk	Marb	RE	Fat
+12	-0.6	+56	+103	+19	+1.7	+57	+0.60
Calving Ease	Birth	205	NR	ADG	365	YR	Scrotal
★★★	80	703	98	4.49	1348	108	37.05
Adj IMF/ratio	Adj REA/ratio	Adj Rib Fat/ratio	Adj Rump Fat/ratio				
3.45 / 92	15.2 / 118	0.44 / 138	0.41 / 117				

Dam WR 6@100. Heifer Bull. Powerful bull that has performed all along. Dam is typical of the Paxton 6704's with a tidy udder and correct in her structure. She has sons working for Cleveland Creek and 4 Buttes. He is a tank and easy to find!



Dam of Lot 34

35 R44 NAPOLEON 5072

Calved: 03/04/25 Reg: +21433969 **PC**

Duff Distinction 9105 Duff Basic Instinct 6501
 Duff Napoleon 232 Duff NL B351 Lady Pop 619
 Duff Eur 443 Merle 808 Duff New Edition 6108
 DCC NL 652K Merle 443#

GDAR Game Day 449# Boyd New Day 8005#
 R44 Eisa Evergreen 002 G D A R Miss Wix 474#
 Sitz RLS Eisa Evergreen 694N Twin Valley Precision E161#
 R L S Eisa Evergreen 272

\$M	+64
\$W	+54
\$B	+103
\$C	+198

CED	BW	WW	YW	Milk	Marb	RE	Fat
+6	+1.1	+58	+98	+20	+0.6	+54	+0.34
Calving Ease	Birth	205	NR	ADG	365	YR	Scrotal
★★	82	644	100	4.12	1230	100	37.08
Adj IMF/ratio	Adj REA/ratio	Adj Rib Fat/ratio	Adj Rump Fat/ratio				
3.23 / 100	12.6 / 100	0.26 / 100	0.32 / 100				

Dam WR 9@103. Embryo Bull out of my foundation 002 cow. Tremendously productive to 12 years of age and shows up frequently in my pedigrees. This bull is royally bred with the semen on his sire no longer available.



36 **R44 NAPOLEON 5080**
 Calved: 03/02/25 Reg: 21433955 **PC**

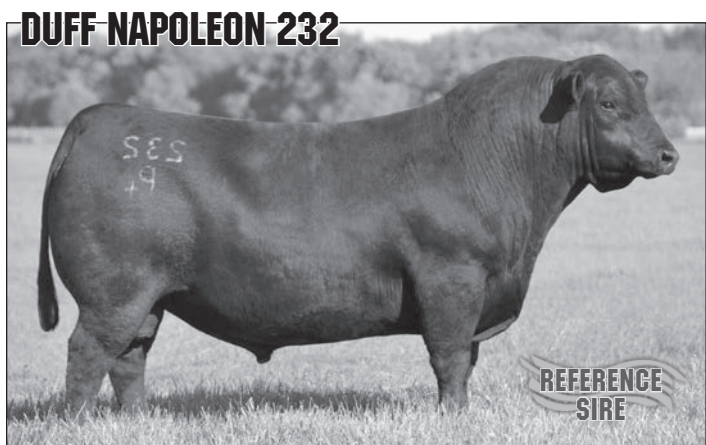
Duff Distinction 9105 Duff Basic Instinct 6501
 Duff Napoleon 232 Duff NL B351 Lady Pop 619
 Duff Eur 443 Merle 808 Duff New Edition 6108
 DCC NL 652K Merle 443#
 O C C Missing Link 830M# O C C Headliner 661H
 R44 Lucy 080 O C C Dixie Erica 946K
 R44 Lucy 858# R44 Paxton 6704
 R44 Lucy 350

\$M	+66
\$W	+44
\$B	+79
\$C	+168

CED	BW	WW	YW	Milk	Marb	RE	Fat
+12	-1.2	+51	+80	+20	+1.1	+3.6	+0.47
Calving Ease	Birth	205	NR	ADG	365	YR	Scrotal
★★★	80	754	106	2.87	1218	98	37.52
Adj IMF/ratio	Adj REA/ratio	Adj Rib Fat/ratio	Adj Rump Fat/ratio				
4.03 / 108	12.4 / 96	0.37 / 116	0.32 / 91				

Dam WR 4@102. Heifer Bull. Can't say enough good things about this bull. While on his dam, he had the most impressive muscle expression and power in any bull I've raised. Absolute standout all summer. His dam is ideal with capacity, tidy udder, and great fleshing ability.

She produced on of the top sellers in last years sale to John and Vanessa Schoen. Strong cow family as well as the granddam is a pathfinder and dam to lot 46.



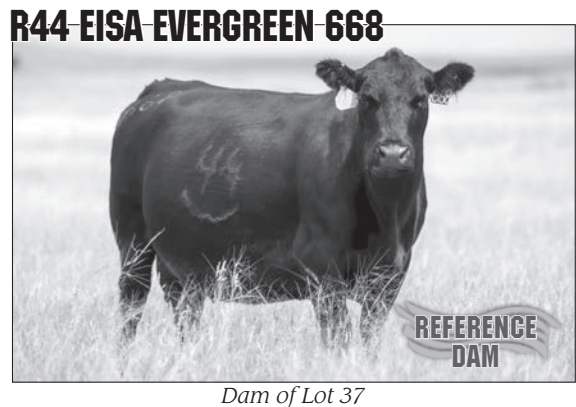
37 **R44 FOUNDATION 5668**
 Calved: 03/06/25 Reg: 21430255 **PC**

O C C Chancellor 767C O C C Zodiac 655Z
 Redland Foundation 249 O C C Dixie Erica 706S
 Redland Lass 211 O C C Emblazon 854E#
 Redland Lass 193
 R44 Cedar Ridge 3164 Cole Creek Cedar Ridge 1V#
 R44 Eisa Evergreen 668# R44 Eisa Evergreen 164
 R44 Eisa Evergreen 453 Mc Cumber 4X13 Extra 077
 Sitz RLS Eisa Evergreen 715R

\$M	+70
\$W	+40
\$B	+78
\$C	+171

CED	BW	WW	YW	Milk	Marb	RE	Fat
+10	+0.4	+46	+79	+23	+3.5	+0.3	+0.52
Calving Ease	Birth	205	NR	ADG	365	YR	Scrotal
★★★	82	719	101	4.15	1255	101	38.13
Adj IMF/ratio	Adj REA/ratio	Adj Rib Fat/ratio	Adj Rump Fat/ratio				
3.68 / 98	11.6 / 90	0.33 / 103	0.39 / 111				

Dam WR 8@103. Heifer Bull. Pathfinder dam has a history of producing high quality bulls. She produced sons working for Scott Davis/Ash Coulee Angus, ND and Shipwheel Cattle Co. Full brother sold to Ken Rohrer in last years sale. Powerful, productive dam and this bull will be same way siring performance with maternal strength. 3 year old full sister is a standout.



Dam of Lot 37

38 **R44 FOUNDATION 5860**
 Calved: 03/12/25 Reg: 21430258 **PC**

O C C Chancellor 767C O C C Zodiac 655Z
 Redland Foundation 249 O C C Dixie Erica 706S
 Redland Lass 211 O C C Emblazon 854E#
 Redland Lass 193
 O C C Cortez 819C O C C Big Time 746Z
 R44 Eola 860 O C C Dixie Erica 680W
 R44 Eola 458 GDAR Game Day 449#
 R44 Eola Lincoln 956

\$M	+80
\$W	+31
\$B	+76
\$C	+179

CED	BW	WW	YW	Milk	Marb	RE	Fat
+10	+0.4	+44	+75	+20	+4.0	+1.4	+0.38
Calving Ease	Birth	205	NR	ADG	365	YR	Scrotal
★★★	86	694	97	3.83	1211	97	36.31
Adj IMF/ratio	Adj REA/ratio	Adj Rib Fat/ratio	Adj Rump Fat/ratio				
3.61 / 97	12.1 / 94	0.24 / 75	0.32 / 91				

Dam WR 6@99. Heifer Bull. Dam is a high capacity powerful Cortez daughter and produced another son of similar type. The wet uddered Foundations out of Cortez's brook outstanding. Full brothers have sold to Redland Angus and Bruce Hould.



41 **R44 FOUNDATION 5353**
 Calved: 02/24/25 Reg: 21430302 **PC**

O C C Chancellor 767C
Redland Foundation 249
 Redland Lass 211

O C C Zodiac 655Z
 O C C Dixie Erica 706S
 O C C Emblazon 854E#
 Redland Lass 193

Mc Cumber Tribute 702
R44 Blackcap 353
 Ox Bow Blackcap 756

Mc Cumber Tremendous 2008
 Lassie 113 of Mc Cumber#
 O C C Emblazon 854E#
 Ox Bow Blackcap 361#

\$M +70
 \$W +41
 \$B +96
 \$C +195

CED	BW	WW	YW	Milk	Marb	RE	Fat
+8	+1.5	+52	+91	+23	+28	+12	+035
Calving Ease	Birth	205	NR	ADG	365	YR	Scrotal
★★	84	744	104	3.87	1314	105	40.32
Adj IMF/ratio	Adj REA/ratio	Adj Rib Fat/ratio	Adj Rump Fat/ratio				
3.93 / 105	14.0 / 109	0.35 / 109	0.35 / 100				

Dam WR 1 @ 111. 2 year old heifer raised a dandy here! Top notch maternal genetics in him. The granddam (756 cow) produced to 16 years of age producing several herd bulls in her career.

39 **R44 FOUNDATION 5970**
 Calved: 04/04/25 Reg: 21430266 **PC**

O C C Chancellor 767C
Redland Foundation 249
 Redland Lass 211

O C C Zodiac 655Z
 O C C Dixie Erica 706S
 O C C Emblazon 854E#
 Redland Lass 193

Ox Bow Emulation 5327
R44 Lucy 970
 R44 Lucy 664

Sinclair Emulation XXP#
 Ox Bow Blackbird 1139
 O C C Paxton 730P#
 R44 Lucy 350

\$M +78
 \$W +37
 \$B +87
 \$C +191

CED	BW	WW	YW	Milk	Marb	RE	Fat
+13	-1.5	+47	+79	+19	+5.0	+1.9	+057
Calving Ease	Birth	205	NR	ADG	365	YR	Scrotal
★★★	78	726	102	3.53	1248	100	36.04
Adj IMF/ratio	Adj REA/ratio	Adj Rib Fat/ratio	Adj Rump Fat/ratio				
4.21 / 113	12.9 / 100	0.36 / 113	0.40 / 114				

Dam WR 4 @ 100. Heifer Bull. My youngest bull in the sale. Dam and granddam are massive ribbed, good uddered broody cows. 3 year old full sister is following suit. Full brother sold to Bruce Hould.



42 **R44 ROSCOE 5952**
 Calved: 03/09/25 Reg: 21430262 **PC**

Redland Emblazon 1205
Redland Roscoe
 Redland Erica 1386

Redland Emblazon 5437
 Redland Blackbird 1632
 Mc Cumber Tremendous 2008
 Redland Erica 1810

O C C Jet Stream 825J#
R44 Eisa Evergreen 952
 R44 Eisa Evergreen 002

O C C Emblazon 854E#
 O C C Juanada 968G
 GDAR Game Day 449#
 Sitz RLS Eisa Evergreen 694N

\$M +65
 \$W +38
 \$B +95
 \$C +188

CED	BW	WW	YW	Milk	Marb	RE	Fat
+8	+0.2	+46	+84	+25	+0.5	+7.1	+010
Calving Ease	Birth	205	NR	ADG	365	YR	Scrotal
★★	82	660	92	3.84	1190	95	33.71
Adj IMF/ratio	Adj REA/ratio	Adj Rib Fat/ratio	Adj Rump Fat/ratio				
2.90 / 78	13.8 / 107	0.28 / 88	0.36 / 103				

Dam WR 5 @ 102. Roscoe consistently injects the right amount of bone and growth into his calves. Jet Stream bred dam is really pretty uddered with a beautiful rib design. Grandam was a long time donor cow.



40 **R44 FOUNDATION 5057**
 Calved: 03/29/25 Reg: 21430273 **PC**

O C C Chancellor 767C
Redland Foundation 249
 Redland Lass 211

O C C Zodiac 655Z
 O C C Dixie Erica 706S
 O C C Emblazon 854E#
 Redland Lass 193

R44 Paxton 6704
R44 Barbaramere Jet 057#
 R44 Barbaramere Jet 452

O C C Paxton 730P#
 R44 Eisa Evergreen 002
 Redland Emblazon 3234
 Ox Bow Barbaramere Jet 5129#

\$M +64
 \$W +48
 \$B +89
 \$C +179

CED	BW	WW	YW	Milk	Marb	RE	Fat
+9	-0.1	+51	+83	+23	+5.8	+0.9	+045
Calving Ease	Birth	205	NR	ADG	365	YR	Scrotal
★★	90	763	107	3.53	1289	104	41.38
Adj IMF/ratio	Adj REA/ratio	Adj Rib Fat/ratio	Adj Rump Fat/ratio				
4.21 / 113	11.8 / 91	0.36 / 113	0.43 / 123				

Dam WR 4 @ 111. High performance bull out of a pathfinder dam. She is very productive and always weans a good one. Wouldn't recommend for heifers as cow carries some birth.

43 **R44 ROSCOE 5155**
 Calved: 03/06/25 Reg: 21430281 **PC**

Redland Emblazon 1205
Redland Roscoe
 Redland Erica 1386

Redland Emblazon 5437
 Redland Blackbird 1632
 Mc Cumber Tremendous 2008
 Redland Erica 1810

O C C Jet Stream 825J#
R44 Blackbird 155
 R44 Blackbird 158

O C C Emblazon 854E#
 O C C Juanada 968G
 G A R Retail Product#
 Isaacs Blackbird 750

\$M +64
 \$W +45
 \$B +95
 \$C +187

CED	BW	WW	YW	Milk	Marb	RE	Fat
+8	+0.5	+52	+95	+27	-.03	+5.3	-.011
Calving Ease	Birth	205	NR	ADG	365	YR	Scrotal
★★	84	760	106	3.78	1309	105	35.3
Adj IMF/ratio	Adj REA/ratio	Adj Rib Fat/ratio	Adj Rump Fat/ratio				
2.57 / 69	13.2 / 102	0.20 / 63	0.24 / 69				

Dam WR 3 @ 97. Powerful cow bull that is bred similar to lot 15. Dam is typical of Jet Stream cattle with impeccable udder quality and an abundance of femininity. Granddam produced into her teens staying sound and fertile.



44

R44 ROSCOE 5163

Calved: 03/09/25 Reg: 21430282

PC

Redland Emblazon 1205
Redland Roscoe
Redland Erica 1386

Redland Emblazon 5437
Redland Blackbird 1632
Mc Cumber Tremendous 2008
Redland Erica 1810

R44 Paxton 6704
R44 Lass 163
R44 Lass 762

O C C Paxton 730P#
R44 Eisa Evergreen 002
Ox Bow Emulation 5327
R44 Lass 463

\$M **+65**
\$W **+53**
\$B **+114**
\$C **+213**

CED	BW	WW	YW	Milk	Marb	RE	Fat
+10	-0.8	+59	+108	+26	+.30	+6.0	+0.05
Calving Ease	Birth	205	NR	ADG	365	YR	Scrotal
★★★	79	748	105	4.35	1338	108	36.9
Adj IMF/ratio	Adj REA/ratio	Adj Rib Fat/ratio	Adj Rump Fat/ratio				
3.98 / 106	12.8 / 99	0.24 / 75	0.24 / 69				

Dam WR 3 @101. Heifer bull that has some gas in the tank. He has performed all along. Good muscle expression and very correct. The Paxton 6704 x Roscoe cross has nicked well. Dam is typical of the Paxton 6704 cattle.

Good real world cattle that can flesh, fertile, strong uddered, and motherly. They are low maintenance, rancher friendly cattle.



45

R44 ROSCOE 5171

Calved: 03/18/25 Reg: 21430285

PC

Redland Emblazon 1205
Redland Roscoe
Redland Erica 1386

Redland Emblazon 5437
Redland Blackbird 1632
Mc Cumber Tremendous 2008
Redland Erica 1810

R44 Paxton 6704
R44 Lucy 171
R44 Lucy 869

O C C Paxton 730P#
R44 Eisa Evergreen 002
Coleman Knight 209
R44 Lucy 654

\$M **+64**
\$W **+47**
\$B **+103**
\$C **+198**

CED	BW	WW	YW	Milk	Marb	RE	Fat
+5	+1.4	+57	+105	+26	+.29	+5.9	+0.29
Calving Ease	Birth	205	NR	ADG	365	YR	Scrotal
★★	92	730	102	4.12	1325	106	37.19
Adj IMF/ratio	Adj REA/ratio	Adj Rib Fat/ratio	Adj Rump Fat/ratio				
3.44 / 92	13.4 / 104	0.31 / 97	0.49 / 140				

Dam WR 3@102. Another good Roscoe x Paxton 6704. He has a huge hip and wide top. Will sire a set of stout calves. Dam is yet another a durable Paxton 6704 daughter.

46

R44 TREMENDOUS 5858

Calved: 03/31/25 Reg: 21430257

PC

Mc Cumber Tremendous 2008
Redland Tremendous 98
Redland Marshall 120

O C C Tremendous 619T#
Miss Wix 2022 HC Mc Cumber#
O C C Do It All 656D
Redland Marshall 93

R44 Paxton 6704
R44 Lucy 858#
R44 Lucy 350

O C C Paxton 730P#
R44 Eisa Evergreen 002
GDAR Game Day 449#
Ox Bow Lucy 112

\$M **+80**
\$W **+47**
\$B **+103**
\$C **+214**

CED	BW	WW	YW	Milk	Marb	RE	Fat
+16	-3.4	+47	+82	+27	+.44	+2.3	+0.20
Calving Ease	Birth	205	NR	ADG	365	YR	Scrotal
★★★	74	744	104	3.53	1267	102	36.42
Adj IMF/ratio	Adj REA/ratio	Adj Rib Fat/ratio	Adj Rump Fat/ratio				
4.27 / 114	13.2 / 102	0.29 / 91	0.30 / 86				

Dam WR 6 @ 104. Heifer Bull. Proven calving ease genetics. Pathfinder dam is one of my best and raised several high selling bulls including the high seller to Eatons of Lindsay, Montana. She is the grandam to the standout lot 36 bull. No surprises in this pedigree.

R44 LUCY 858



Pathfinder Dam of Lot 46

Visit our new website!

PIKECATTLE.COM

View video of all sale bulls at



www.MilkRiverAngus.com or
www.FrontierLiveSale.com



48 **R44 TREMENDOUS 5356**
 Calved: 02/18/25 Reg: 21430303 **PC**

Mc Cumber Tremendous 2008 O C C Tremendous 619T#
 Redland Tremendous 98 Miss Wix 2022 HC Mc Cumber#
 Redland Marshall 120 O C C Do It All 656D
 Redland Marshall 93

Redland Foundation 249 O C C Chancellor 767C
 Redland Lass 211

R44 Lucy 356 R44 Cedar Ridge 3164
 R44 Lucy 654 R44 Lucy 001

\$M	+87
\$W	+34
\$B	+82
\$C	+193

CED	BW	WW	YW	Milk	Marb	RE	Fat
+13	-1.2	+43	+76	+22	+0.06	+0.07	+0.02
Calving Ease	Birth	205	NR	ADG	365	YR	Scrotal
★★★	74	695	97	3.94	1221	98	35.13
Adj IMF/ratio	Adj REA/ratio	Adj Rib Fat/ratio	Adj Rump Fat/ratio				
4.25 / 114	13.1 / 102	0.30 / 94	0.33 / 94				

Dam WR 1 @ 97. Heifer Bull out of a Foundation 2 year old. Tremendous 98 bull was purchased to infuse more of the cow maker Tremendous 2008 into my herd. Calves come easy with good vigor.



49 **R44 TREMENDOUS 5383**
 Calved: 02/18/25 Reg: 21430311 **PC**

Mc Cumber Tremendous 2008 O C C Tremendous 619T#
 Redland Tremendous 98 Miss Wix 2022 HC Mc Cumber#
 Redland Marshall 120 O C C Do It All 656D
 Redland Marshall 93

Redland Foundation 249 O C C Chancellor 767C
 Redland Lass 211

R44 Lass 383 R44 Paxton 6704
 R44 Lass 163 R44 Lass 762

\$M	+87
\$W	+33
\$B	+78
\$C	+188

CED	BW	WW	YW	Milk	Marb	RE	Fat
+14	-1.8	+43	+76	+20	-0.02	+0.08	+0.04
Calving Ease	Birth	205	NR	ADG	365	YR	Scrotal
★★★	70	663	93	4.13	1194	96	36.13
Adj IMF/ratio	Adj REA/ratio	Adj Rib Fat/ratio	Adj Rump Fat/ratio				
3.31 / 89	13.4 / 104	0.33 / 103	0.35 / 100				

Dam WR 1 @94. Heifer Bull. Smooth made calving ease prospect. Dam is another attractive Foundation daughter. Granddam is the dam to the good lot 44 bull.



47 **R44 TREMENDOUS 5176**
 Calved: 03/14/25 Reg: 21430287 **PC**

Mc Cumber Tremendous 2008 O C C Tremendous 619T#
 Redland Tremendous 98 Miss Wix 2022 HC Mc Cumber#
 Redland Marshall 120 O C C Do It All 656D
 Redland Marshall 93

Mc Cumber Tribute 702 Mc Cumber Tremendous 2008
 Lassie 113 of Mc Cumber#

R44 Barbaramere Jet 176 O C C Cortez 819C
 R44 Barbaramere Jet 969 R44 Barbaramere Jet 661

\$M	+83
\$W	+47
\$B	+91
\$C	+201

CED	BW	WW	YW	Milk	Marb	RE	Fat
+11	-0.8	+54	+93	+23	+0.07	+0.27	+0.12
Calving Ease	Birth	205	NR	ADG	365	YR	Scrotal
★★★	81	767	107	4.02	1292	104	36.56
Adj IMF/ratio	Adj REA/ratio	Adj Rib Fat/ratio	Adj Rump Fat/ratio				
4.04 / 108	12.5 / 97	0.34 / 106	0.39 / 111				

Dam WR 3 @ 102. Heifer Bull. Top calving ease prospect. Soft made bull with a ton of middle to create the drought tolerant type of cattle. Bred top and bottom side to the cow maker Tremendous 2008. Dam is ideal in her makeup being massive ribbed, wedge shaped, strong uddered, and productive. She produced a past standout that sold to Gaugler Angus. Great granddam is a donor cow for Gardner Angus. Royal pedigree on this guy that should be impactful for even the best herds.



R44 BARBARAMERE JET 969

Granddam of Lot 47



50 **R44 4REAL 5261**
 Calved: 03/08/25 Reg: 21430291 **PC**

Duff-JC 4Real 16250
S&R 4Real 226
 S&R Ms Chisum 213-647

Duff Napoleon 232
 Duff Amigo 927K Juanada 071
 S&R Chisum 213
 S&R Ms Final Answer 031

R44 Paxton 6704
R44 Forever Lady 261
 R44 Forever Lady 566#

O C C Paxton 730P#
 R44 Eisa Evergreen 002
 Mc Cumber 4X13 Extra 077
 R44 Forever Lady 353

\$M	+79
\$W	+42
\$B	+85
\$C	+189

CED	BW	WW	YW	Milk	Marb	RE	Fat
+11	-0.6	+45	+76	+26	+1.8	-0.03	+0.32
Calving Ease	Birth	205	NR	ADG	365	YR	Scrotal
★★★	82	718	101	3.50	1212	98	39.2
Adj IMF/ratio	Adj REA/ratio	Adj Rib Fat/ratio	Adj Rump Fat/ratio				
3.96 / 106	11.9 / 92	0.33 / 103	0.29 / 83				

Dam WR 2 @ 105. Heifer Bull. Sire was purchased from Ray Gardner and has done a nice job. Daughters look promising. Dam is another productive Paxton 6704 daughter. Granddam produced a high selling herd bull to Redland Angus.

52 **R44 4REAL 5277**
 Calved: 03/06/25 Reg: 21430298 **PC**

Duff-JC 4Real 16250
S&R 4Real 226
 S&R Ms Chisum 213-647

Duff Napoleon 232
 Duff Amigo 927K Juanada 071
 S&R Chisum 213
 S&R Ms Final Answer 031

Redland Foundation 249
R44 Barbaramere Jet 277
 R44 Barbaramere Jet 077

O C C Chancellor 767C
 Redland Lass 211
 R44 Paxton 6704
 R44 Barbaramere Jet 764

\$M	+78
\$W	+34
\$B	+93
\$C	+199

CED	BW	WW	YW	Milk	Marb	RE	Fat
+15	-1.1	+42	+76	+23	+3.1	-0.02	+0.41
Calving Ease	Birth	205	NR	ADG	365	YR	Scrotal
★★★	80	683	96	4.16	1265	102	38.14
Adj IMF/ratio	Adj REA/ratio	Adj Rib Fat/ratio	Adj Rump Fat/ratio				
5.38 / 144	12.1 / 94	0.40 / 125	0.40 / 114				

Dam WR 2 @ 101. Heifer Bull that is bred exactly like lot 52. The two are very similar in type and would be a great pair on a set of heifers. 4 Real cattle will inject some thickness and doability into cattle.

51 **R44 4REAL 5271**
 Calved: 03/07/25 Reg: 21430295 **PC**

Duff-JC 4Real 16250
S&R 4Real 226
 S&R Ms Chisum 213-647

Duff Napoleon 232
 Duff Amigo 927K Juanada 071
 S&R Chisum 213
 S&R Ms Final Answer 031

Redland Foundation 249
R44 Erica Lass 271
 R44 Erica Lass 054

O C C Chancellor 767C
 Redland Lass 211
 R44 Paxton 6704
 FairView Erica Lass 3253

\$M	+76
\$W	+38
\$B	+70
\$C	+167

CED	BW	WW	YW	Milk	Marb	RE	Fat
+14	-0.7	+45	+78	+23	+3.3	+0.07	+0.52
Calving Ease	Birth	205	NR	ADG	365	YR	Scrotal
★★★	81	738	103	3.92	1290	103	38.17
Adj IMF/ratio	Adj REA/ratio	Adj Rib Fat/ratio	Adj Rump Fat/ratio				
3.61 / 97	12.5 / 97	0.37 / 116	0.37 / 106				

Dam WR 2 @ 102. Heifer Bull. This calving ease prospect really performed. He exhibits extra thickness and muscle expression. Dam is a pretty added, productive Foundation daughter with a bright future.



53 **R44 4REAL 5278**
 Calved: 03/02/25 Reg: 21430299 **PC**

Duff-JC 4Real 16250
S&R 4Real 226
 S&R Ms Chisum 213-647

Duff Napoleon 232
 Duff Amigo 927K Juanada 071
 S&R Chisum 213
 S&R Ms Final Answer 031

Redland Foundation 249
R44 Forever Lady 278
 R44 Forever Lady 658

O C C Chancellor 767C
 Redland Lass 211
 O C C Paxton 730P#
 R44 Forever Lady 160

\$M	+76
\$W	+30
\$B	+53
\$C	+145

CED	BW	WW	YW	Milk	Marb	RE	Fat
+17	-3.1	+35	+56	+21	+3.6	+0.01	+0.55
Calving Ease	Birth	205	NR	ADG	365	YR	Scrotal
★★★	72	665	93	3.51	1111	89	36.01
Adj IMF/ratio	Adj REA/ratio	Adj Rib Fat/ratio	Adj Rump Fat/ratio				
3.71 / 99	12.0 / 93	0.31 / 97	0.30 / 86				

Dam WR 2 @98. Heifer Bull. Really good calving ease prospect that was set back by a facial infection. Has no lasting effects from it and his Foundation dam produced the high seller in last years sale. She is really good!

View video of all sale bulls at
www.MilkRiverAngus.com or
www.FrontierLiveSale.com

54

R44 TRENDSETTER 5955

Calved: 03/18/25 Reg: 21430264

PC

Redland Trendsetter 1869
R44 Trendsetter 2158
R44 Blackbird 158

O C C Do It All 656D
Redland Beebe Queenmere 3114
G A R Retail Product#
Isaacs Blackbird 750

R44 Emulation 7756
R44 Eisa Evergreen 955#
R44 Eisa Evergreen 002

Sinclair Emulation XXP#
Ox Bow Blackcap 756
GDAR Game Day 449#
Sitz RLS Eisa Evergreen 694N

\$M	+58
\$W	+48
\$B	+115
\$C	+207

CED	BW	WW	YW	Milk	Marb	RE	Fat
+1	+2.6	+61	+109	+26	+46	+32	+007
Calving Ease	Birth	205	NR	ADG	365	YR	Scrotal
★	90	760	106	4.07	1342	108	36
Adj IMF/ratio	Adj REA/ratio	Adj Rib Fat/ratio	Adj Rump Fat/ratio				
5.08 / 136	12.5 / 97	0.32 / 100	0.30 / 86				

Dam 4@105. Powerful cow bull! Dam is a really productive Path-finder cow out of my foundation donor cow 002. She is a powerful, sound footed, strong uddered, productive cow. This guy has performed all along and will put some performance into his calves.



55

R44 TRENDSETTER 5264

Calved: 03/10/25 Reg: 21430293

PC

Redland Trendsetter 1869
R44 Trendsetter 2158
R44 Blackbird 158

O C C Do It All 656D
Redland Beebe Queenmere 3114
G A R Retail Product#
Isaacs Blackbird 750

R44 Emulation 7756
R44 Eisa Evergreen 264
R44 Eisa Evergreen 766

Sinclair Emulation XXP#
Ox Bow Blackcap 756
O C C Paxton 730P#
R44 Eisa Evergreen 558#

\$M	+84
\$W	+38
\$B	+78
\$C	+185

CED	BW	WW	YW	Milk	Marb	RE	Fat
+3	+1.6	+46	+75	+24	+33	+26	+009
Calving Ease	Birth	205	NR	ADG	365	YR	Scrotal
★★	86	687	96	3.00	1130	91	35.27
Adj IMF/ratio	Adj REA/ratio	Adj Rib Fat/ratio	Adj Rump Fat/ratio				
3.59 / 96	12.8 / 99	0.30 / 94	0.33 / 94				

Dam 2 @ 98. Similar breeding to the lot 54 bull and from the same cow family. Dam is ideal in her makeup with a deep sweeping rib design, wedge shape, feminine, yet having a nice wide muzzle. Will moderate and inject efficiency.

R44 EISA EVERGREEN 264



Dam of Lot 55

56

R44 TRIBUTE 5377

Calved: 03/14/25 Reg: 21430308

PC

Mc Cumber Tribute 702
S&R Tribute 702-247
S&R Ms Honcho 010

Mc Cumber Tremendous 2008
Lassie 113 of Mc Cumber#
Duff Honcho 426
S&R Ms Thunder 528

Redland Foundation 249
R44 Forever Lady 377
R44 Forever Lady 068

O C C Chancellor 767C
Redland Lass 211
R44 Emulation 7756
R44 Forever Lady 658

\$M	+80
\$W	+44
\$B	+85
\$C	+190

CED	BW	WW	YW	Milk	Marb	RE	Fat
+8	+1.1	+53	+94	+25	-.05	+1.15	+027
Calving Ease	Birth	205	NR	ADG	365	YR	Scrotal
★★★	81	733	103	3.78	1311	105	38.4
Adj IMF/ratio	Adj REA/ratio	Adj Rib Fat/ratio	Adj Rump Fat/ratio				
3.23 / 86	12.3 / 95	0.33 / 103	0.48 / 137				

Dam 1 @ 103. Heifer Bull. 2 year old Foundation hit a home run with this one. Sire by McCumber Tribute was purchased from Ray Gardner and has tremendous libido. His daughters look to be a real treasure.

Granddam is one of my top cows and the front pasture type. Calving ease genetics with plenty of growth and power bred in.

R44 FOREVER LADY 068



Granddam of Lot 56



Visit our new website!

PIKECATTLE.COM

Deep ribbed, easy fleshing cows with ideal udder quality is what keeps inputs and labor to a minimum. These are the types of cows producing these bulls.



CALVING SUPPLEMENTS

Last trimester and calving to breed-back interval is the most critical time for cow nutrition.

Vitamin and mineral supplement support:

- ✓ *Reduced calving problems*
- ✓ *Newborn calf vigor*
- ✓ *Improved colostrum quality*
- ✓ *Overall calf health*
- ✓ *Improved breed-back*



we offer the following:

Crystalyx - molasses based lick tubs containing protein and vitamin and mineral package.

Beef Pro - available in molasses bio-barrel tubs, 33# blocks, or granular. Contains biuret for balanced protein release. 35 - 100% protein, vitamin and mineral package.

Granular mineral - Bio Range and Blueprint both over 100% organic (chelated) trace minerals for complete absorption, with no antagonistic effects



406-399-1113
milkriverag.com
Chinook, MT

Talk to us about delivery options to your ranch!



- Cake and Pellets (Bulk or Bagged)**
- 16% - 30% Range Cake
 - Calf Grower Pellets
 - Bull Developer Pellets

- 4-H Market Animals**
Show-rite feeds and supplements
- Beef
 - Swine
 - Lamb



1040 North Fork Rd
Chinook, MT 59523

Presorted
FIRST CLASS
US Postage
Paid
Ballyhoo Printing
59457

FIRST CLASS

Wednesday
April 15, 2026

Bear Paw Livestock
Chinook, Montana

Lunch at 11:30 • Sale at 1:00



www.MilkRiverAngus.com